

MONTERRA

Mini Spring Base Lounge Arm Chair

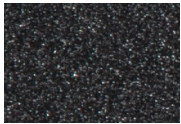


Item Number:	#424-MSB
Cushion:	#24 (seat & back)
Material:	Wrought Iron
Dimensions:	W35.75" D31" H39"
Seat Cushion:	W23" D21" H3.5"
Back Cushion:	W27" D4" H24"
Arm Height:	22.5"
Seat Height:	19"
Weight:	60 lbs.
Warranty:	Limited 5 Year Structural (frame)
(Commercial)	Limited 3 Year Finish
	Limited 1 Year Cushion
	Limited 1 year Component Parts
Features:	<ul style="list-style-type: none"> -3/4" Steel Tubing Frame -1 1/2" Flat Embossed Back Bars -Convex Back Bend with Lumbar Support -Enlarged Hand-Hammered Rivets -Galvanized Steel Mesh Seat -Reticulated Outdoor-Grade Foam -Glides Protect Frame & Surface (COM0101A)

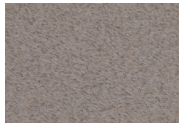


COM Yardage: Back Cushion - 3.5 yards
**Based on 54" wide plain fabric w/ no repeat railroad, or centering. Contact sales@owlee.com for custom fabric quote.*

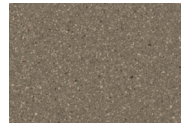
Finishes:



SP21: Graphite



SW40: Driftwood



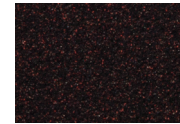
TC20: Sandalwood



SP18: Dark Bronze



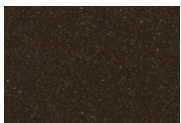
SP40: Copper Canyon



SP11: Rosewood



SP42: Espresso



SP22: Sable



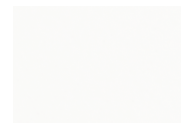
PG10: Terra Antigua



VT15: Velvet Pewter



VT35: Velvet Black



VT25: Velvet White



VT05: Velvet Bronze

