

MONTERRA

Swivel Rocker Lounge Chair



Item Number: #421-SR
 Cushion: #21 (Seat, Back & Arms)
 Material: Wrought Iron
 Dimensions: W42.5" D37.75" H44.5"
 Seat Cushion: W26" D29" H8"
 Back Cushion: W34" D9" H28.5"
 Arm Cushions: W7" D28" H13.5
 Arm Height: 25"
 Seat Height: 19.5"
 Weight: 78 lbs.
 Warranty: Limited 5 Year Structural (frame)
 (Commercial) Limited 3 Year Finish
 Limited 1 Year Cushion
 Limited 1 year Component Parts

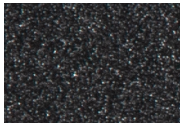


Features: -3/4" Steel Tubing Frame
 -1 1/2" Flat Embossed Back Bars
 -Convex Back Bend with Lumbar Support
 -Enlarged Hand-Hammered Rivets
 -Galvanized Steel Mesh Seat
 -Custom Tufted Back & Arm Cushions
 -PlushComfort™ Seat Cushion
 -Glides Protect Frame & Surface (COM0604)

COM Yardage: 5 yards

Finishes:

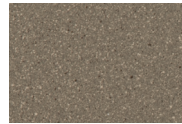
**Based on 54" wide plain fabric w/ no repeat railroad, or centering. Contact sales@owlee.com for custom fabric quote.*



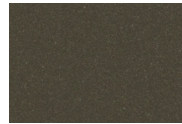
SP21: Graphite



SW40: Driftwood



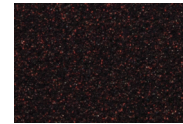
TC20: Sandalwood



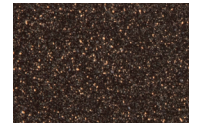
SP18: Dark Bronze



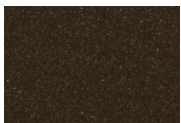
SP40: Copper Canyon



SP11: Rosewood



SP42: Espresso



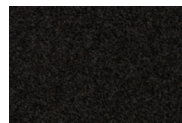
SP22: Sable



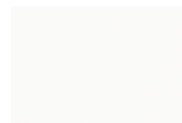
PG10: Terra Antigua



VT15: Velvet Pewter



VT35: Velvet Black



VT25: Velvet White



VT05: Velvet Bronze

