

MONTERRA

Spring Base Lounge Chair

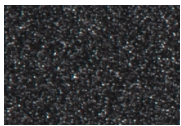


- Item Number: #421-SB
- Cushion: #21 (Seat, Back & Arms)
- Material: Wrought Iron
- Dimensions: W42.5" D38" H44"
- Seat Cushion: W26" D29" H8"
- Back Cushion: W34" D9" H28.5"
- Arm Cushions: W7" D28" H13.5" (2)
- Arm Height: 25.5"
- Seat Height: 19.5"
- Weight: 76 lbs.
- Warranty: Limited 20 Year Structural (frame)
 (Retail) Limited 5 Year Finish
 Limited 5 Year Cushion
 Limited 2 year Component Parts
- Features:
 - 3/4" Steel Tubing Frame
 - 1 1/2" Flat Embossed Back Bars
 - Convex Back Bend with Lumbar Support
 - Enlarged Hand-Hammered Rivets
 - Galvanized Steel Mesh Seat
 - Custom Tufted Back & Arm Cushions
 - PlushComfort™ Seat Cushion
 - Glides Protect Frame & Surface (COM0101A)



COM Yardage: 5 yards
 *Based on 54" wide plain fabric w/ no repeat railroad, or centering. Contact sales@owlee.com for custom fabric quote.

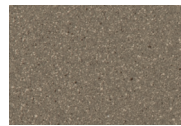
Finishes:



SP21: Graphite



SW40: Driftwood



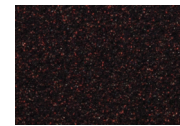
TC20: Sandalwood



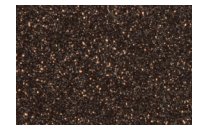
SP18: Dark Bronze



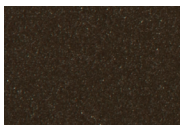
SP40: Copper Canyon



SP11: Rosewood



SP42: Espresso



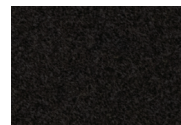
SP22: Sable



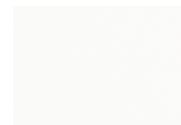
PG10: Terra Antigua



VT15: Velvet Pewter



VT35: Velvet Black



VT25: Velvet White



VT05: Velvet Bronze

