

MONTERRA

Spring Base Lounge Chair

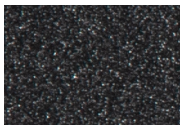


Item Number:	#421-SB
Cushion:	#21 (Seat, Back & Arms)
Material:	Wrought Iron
Dimensions:	W42.5" D38" H44"
Seat Cushion:	W26" D29" H8"
Back Cushion:	W34" D9" H28.5"
Arm Cushions:	W7" D28" H13.5" (2)
Arm Height:	25.5"
Seat Height:	19.5"
Weight:	76 lbs.
Warranty:	Limited 5 Year Structural (frame) Limited 3 Year Finish Limited 1 Year Cushion Limited 1 year Component Parts
Features:	-3/4" Steel Tubing Frame -1 1/2" Flat Embossed Back Bars -Convex Back Bend with Lumbar Support -Enlarged Hand-Hammered Rivets -Galvanized Steel Mesh Seat -Custom Tufted Back & Arm Cushions -PlushComfort™ Seat Cushion -Glides Protect Frame & Surface (COM0101A)



COM Yardage: 5 yards

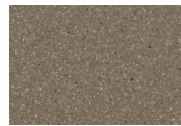
Finishes: **Based on 54" wide plain fabric w/ no repeat railroad, or centering. Contact sales@owlee.com for custom fabric quote.*



SP21: Graphite



SW40: Driftwood



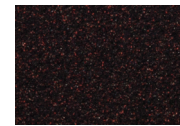
TC20: Sandalwood



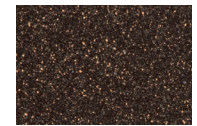
SP18: Dark Bronze



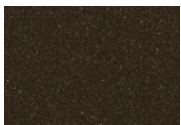
SP40: Copper Canyon



SP11: Rosewood



SP42: Espresso



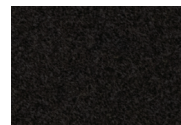
SP22: Sable



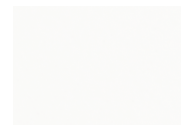
PG10: Terra Antigua



VT15: Velvet Pewter



VT35: Velvet Black



VT25: Velvet White



VT05: Velvet Bonze

