

Grand Cay

Crescent Love Seat

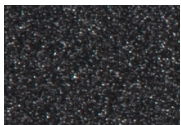


- Item Number: #68155-2S
 Cushion: #155
 Material: Wrought Aluminum
 Dimensions: W67.25" D36.25" H38.5"
 Seat Height: 18.75"
 Arm Height: 25.75"
 Seat Cushion: W58" D25" H7"
 Back Cushion: W32" D5" 25"
 Weight: 64 lbs.
 Warranty: (Commercial) Limited 5 Year Structural (frame)
 Limited 3 Year Finish
 Limited 1 Year Cushion
 Limited 1 year Component Parts
 Features: -2" Wide Arm
 -Cast Aluminum Back Detail
 -Delrin Insert Glides
 -Pleated Pillow Back Cushion
 -Sytex Seating System
 -UV Resistant
 -Glides: COM0126

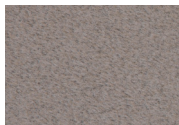


COM Yardage: Seat & Back Cushions - 6.5 yards
**Based on 54" wide plain fabric w/ no repeat railroad, or centering. Contact sales@owlee.com for custom fabric quote.*

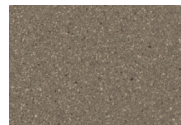
Finishes:



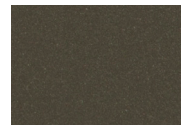
SP21: Graphite



SW40: Driftwood



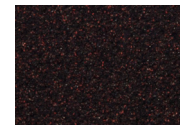
TC20: Sandalwood



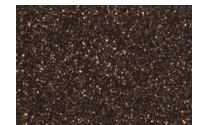
SP18: Dark Bronze



SP40: Copper Canyon



SP11: Rosewood



SP42: Espresso



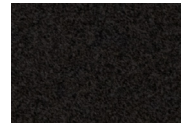
SP22: Sable



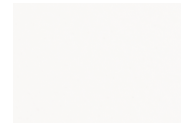
PG10: Terra Antigua



VT15: Velvet Pewter



VT35: Velvet Black



VT25: Velvet White



VT05: Velvet Bonze

