

# GIOS

## Ottoman



Item Number: #4530-O

Cushion: #30

Material: Wrought Aluminum

Dimensions: W32" D20" H16.5"

Seat Height: 16.5"

Arm Height: 14.25"

Cushion: W26" D20" H6"

Weight: 18 lbs.

Warranty: Limited 20 Year Structural (frame)  
Limited 5 Year Finish  
Limited 5 Year Cushion  
Limited 2 year Component Parts

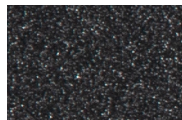
Features: -3" x 3/4" Rectangle Tube Aluminum Frame  
-Contoured Back for Support & Comfort  
-2" Flat Aluminum Bar Seat Support  
-Reticulated Outdoor-Grade Foam  
-Super-Polyester Powder Coating  
-UV Resistant  
-Glides: COM0122



COM Yardage: 1.5 yards

*\*Based on 54" wide plain fabric w/ no repeat railroad, or centering. Contact sales@owlee.com for custom fabric quote.*

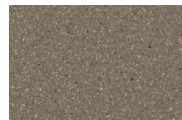
### Finishes:



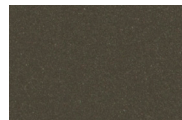
SP21: Graphite



SW40: Driftwood



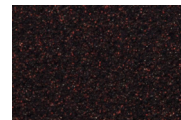
TC20: Sandalwood



SP18: Dark Bronze



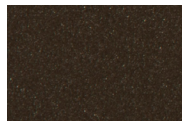
SP40: Copper Canyon



SP11: Rosewood



SP42: Espresso



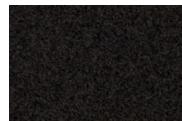
SP22: Sable



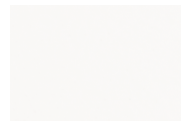
PG10: Terra Antigua



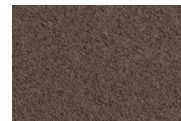
VT15: Velvet Pewter



VT35: Velvet Black



VT25: Velvet White



VT05: Velvet Bronze

