

# GIOS

Ottoman



Item Number: #4530-O  
Cushion: #30  
Material: Wrought Aluminum  
Dimensions: W32" D20" H16"  
Cushion: W26" D20" H6"  
Weight: 18 lbs.  
Warranty: Limited 5 Year Structural (frame)  
(Commercial) Limited 3 Year Finish  
Limited 1 Year Cushion  
Limited 1 year Component Parts

Features: -3" x 3/4" Rectangle Tube Aluminu Frame  
-Contoured Back for Support & Comfort  
-2" Flat Aluminum Bar Seat Support  
-Reticulated Outdoor-Grade Foam  
-Super-Polyester Powder Coating  
-UV Resistant  
-Glides: COM0122

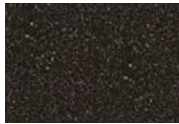
COM Yardage: 1.5 yards  
*\*Based on 54" wide plain fabric w/ no repeat railroad, or centering. Contact sales@owlee.com for custom fabric quote.*



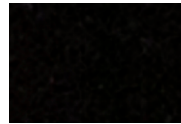
## Finishes:



PG20: Coastal Grey



SP21: Graphite



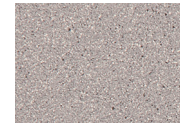
SP08: Textured Black



TC75: Oxford White



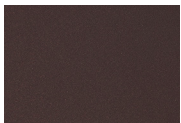
SW40: Driftwood



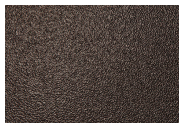
TC20: Sandalwood



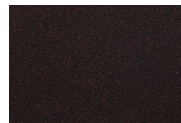
SP18: Dark Bronze



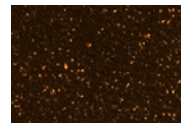
PG50: Metallic Cinnamon



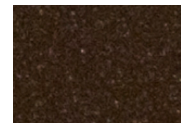
SP40: Copper Canyon



SP11: Rosewood



SP42: Espresso



SP22: Sable



TG10: Terra Antigua

