

Marin

Flex Comfort Lounge Chair



Item Number: #37162-CC

Cushion: #162

Material: Wrought Aluminum

Dimensions: W29" D31.75" H36.75"

Cushion: W26" D77" H1.5"

Arm Height: 25"

Seat Height: 16.5"

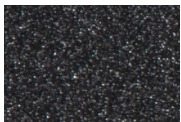
Weight: 29 lbs.

Warranty: Limited 5 Year Structural (frame)
 Limited 3 Year Finish
 Limited 1 Year Flex Comfort
 Limited 1 year Component Parts

Features: -2" Wide Arm
 -Flex Comfort Seating System
 -Delrin Insert Glides
 -High Efficiency Transfer Powder Coat
 -UV Resistant
 -Glides: COM0126



Finishes:



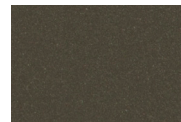
SP21: Graphite



SW40: Driftwood



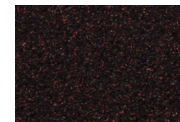
TC20: Sandalwood



SP18: Dark Bronze



SP40: Copper Canyon



SP11: Rosewood



SP42: Espresso



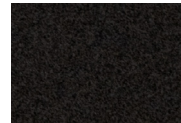
SP22: Sable



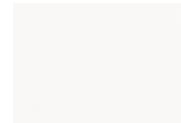
PG10: Terra Antigua



VT15: Velvet Pewter



VT35: Velvet Black



VT25: Velvet White



VT05: Velvet Bonze

