

# PACIFICA

Adjustable Chaise



Item Number: #49169-CH  
Cushion: #169  
Material: Steel  
Dimensions: W30" D71.25" H41"  
Seat Cushion: W25.5" D52" H5"  
Back Cushion: W25.5" D3" H26"  
Arm Height: 22.25"  
Seat Height: 16"  
Weight: 121 lbs.

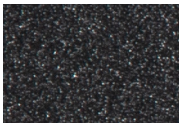
Warranty: Limited 5 Year Structural (frame)  
(Commercial) Limited 3 Year Finish  
Limited 1 Year Cushion  
Limited 1 year Component Parts

Features: -1" x 0.6" Rect. Steel Tube Frame  
-PlushComfort™ Seat Cushion  
-Pillow Back Cushion  
-Complements Casual Iron Bases  
-DuPont Delrin Glides (COM1350)  
-Super-Polyester Powder Coating  
-UV Resistant



COM Yardage: Seat & Back Cushions - 3.75 yards  
*\*Based on 54" wide plain fabric w/ no repeat railroad, or centering. Contact sales@owlee.com for custom fabric quote.*

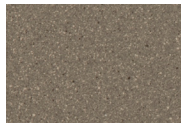
## Finishes:



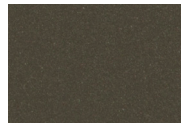
SP21: Graphite



SW40: Driftwood



TC20: Sandalwood



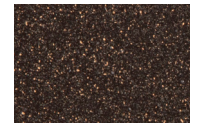
SP18: Dark Bronze



SP40: Copper Canyon



SP11: Rosewood



SP42: Espresso



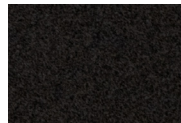
SP22: Sable



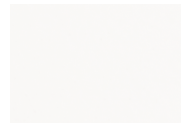
PG10: Terra Antigua



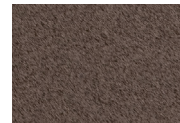
VT15: Velvet Pewter



VT35: Velvet Black



VT25: Velvet White



VT05: Velvet Bronze

