

AVALON

Lounge Chair



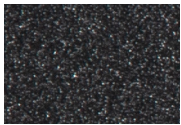
Item Number: #4355-CC
Cushion: #55
Material: Wrought Iron
Dimensions: W27.5" D33" H41"
Seat Cushion: W24" D24" H6.5"
Back Cushion: W24" D4.5" H23"
Arm Height: 27"
Seat Height: 17.5"
Weight: 56 lbs.
Warranty: (Retail) Limited 20 Year Structural (frame)
Limited 5 Year Finish
Limited 2 Year Cushion
Limited 2 year Component Parts

Features: -Hand Forged Wrought Iron
-1/2" Solid Bar Frame
-Galvanized Steel Edging
-Camel Back Design
-Lumbar Back Support
-Hand Forged Scrolls
-DuPont Delrin Glides (COM0101A)



COM Yardage: 3 yards
**Based on 54" wide plain fabric w/ no repeat railroad, or centering. Contact sales@owlee.com for custom fabric quote.*

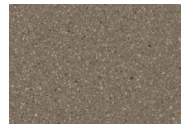
Finishes:



SP21: Graphite



SW40: Driftwood



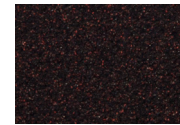
TC20: Sandalwood



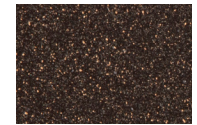
SP18: Dark Bronze



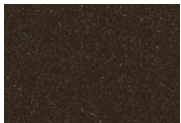
SP40: Copper Canyon



SP11: Rosewood



SP42: Espresso



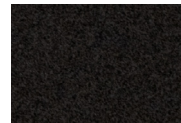
SP22: Sable



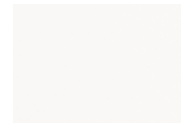
PG10: Terra Antigua



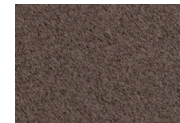
VT15: Velvet Pewter



VT35: Velvet Black



VT25: Velvet White



VT05: Velvet Bonze

