

ARIS

Dining Arm Chair

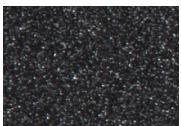


Item Number: #2733-A
Cushion: #33-S (seat)
#173-B (back - optional)
Material: Wrought Aluminum
Dimensions: W24" D26.25" H38"
Seat Cushion: W20" D19" H3.5"
Back Cushion: W20.5" D1.5" H20.25"
Arm Height: 25.5"
Seat Height: 19.75"
Weight: 34 lbs.
Warranty: Limited 20 Year Structural (frame)
(Retail) Limited 5 Year Finish
Limited 2 Year Cushion
Limited 2 year Component Parts

Features: -1"x2" Rect. Aluminum Tube Frame
-Super-Polyester Powder Coating
-UV Resistant
-Flexible Steel Seat Slats
-Reciculated Outdoor-Grade Foam
-Optional welt and cording available
-DuPont Delrin Glides (COM0124)

COM Yardage: Seat Cushion - 1 yard
Back Cushion - 2 yard
**Based on 54" wide plain fabric w/ no repeat railroad, or centering. Contact sales@owlee.com for custom fabric quote.*

Finishes:



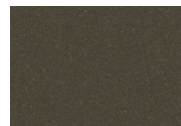
SP21: Graphite



SW40: Driftwood



TC20: Sandalwood



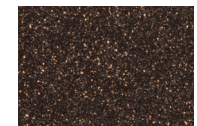
SP18: Dark Bronze



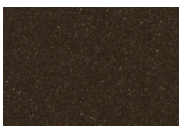
SP40: Copper Canyon



SP11: Rosewood



SP42: Espresso



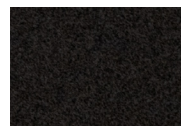
SP22: Sable



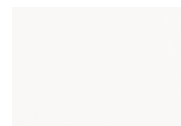
PG10: Terra Antigua



VT15: Velvet Pewter



VT35: Velvet Black



VT25: Velvet White



VT05: Velvet Bonze

