

MARQUETTE

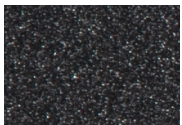
Love Seat



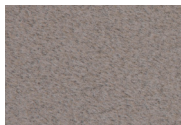
Item Number: #2056-2S
 Cushion: #56 (x2)
 Material: Wrought Iron
 Dimensions: W51.75" D36.25" H35.25"
 Seat Cushion: W24" D24" H6" (x2)
 Back Cushion: W24" D8" H24" (x2)
 Arm Height: 25.25"
 Seat Height: 17.75"
 Weight: 94 lbs.
 Warranty: Limited 20 Year Structural (frame)
 (Retail) Limited 5 Year Finish
 Limited 2 Year Cushion
 Limited 2 year Component Parts
 Features: -3/4" Galvanized Steel Tubing Frame
 -Galvanized Interwoven back
 -Spring Steel Strap Seat
 -Aluminum Rivets
 -Leg Brace Support Stretchers
 -PlushComfort™ Seat Cushion
 -Glides Protect Frame & Surface (COM0101A)
 COM Yardage: 6 yards
**Based on 54" wide plain fabric w/ no repeat railroad, or centering. Contact sales@owlee.com for custom fabric quote.*



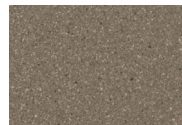
Finishes:



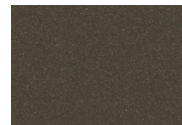
SP21: Graphite



SW40: Driftwood



TC20: Sandalwood



SP18: Dark Bronze



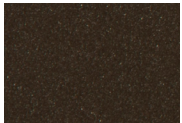
SP40: Copper Canyon



SP11: Rosewood



SP42: Espresso



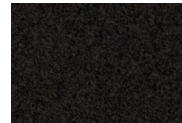
SP22: Sable



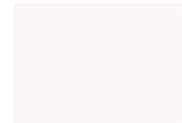
PG10: Terra Antigua



VT15: Velvet Pewter



VT35: Velvet Black



VT25: Velvet White



VT05: Velvet Bronze

