

PASADERA

Crescent Love Seat



Item Number: #86155-2S
 Cushion: #155 (seat & back)
 Material: Steel
 Dimensions: W67" D35.50" H38.25"
 Seat Cushion: W58" D25" H7"
 Back Cushion: W32" D5" H25"
 Arm Height: 26"
 Seat Height: 19"
 Weight: TBD
 Warranty: Limited 5 Year Structural (frame)
 (Commercial) Limited 3 Year Finish
 Limited 1 Year Cushion
 Limited 1 year Component Parts
 Features: -.5x1.5" Steel Tube Frame
 -Hand Forged Scrolls
 -Syntex™ Elastic Seat Decking
 -Super-Polyester powder coating
 -UV Resistant
 -Plush Comfort™ Seat Insert
 -Protective Glides (COM1300)

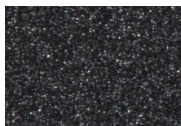


COM Yardage: Seat & Back Cushions - 6.5 yards
**Based on 54" wide plain fabric w/ no repeat railroad, or centering. Contact sales@owlee.com for custom fabric quote.*

Finishes:



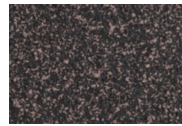
PG20: Coastal Grey



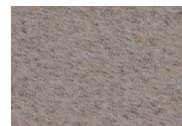
SP21: Graphite



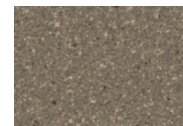
SP08: Textured Black



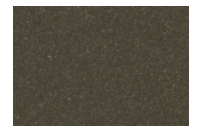
TG10: Terra Antigua



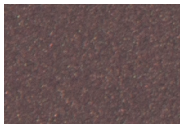
SW40: Driftwood



TC20: Sandalwood



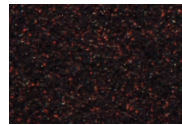
SP18: Dark Bronze



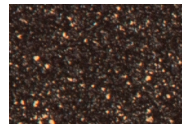
PG50: Metallic Cinnamon



SP40: Copper Canyon



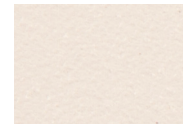
SP11: Rosewood



SP42: Espresso



SP22: Sable



TC75: Oxford White

