

CLASSICO-W

Adjustable Double Chaise



Item Number: #938-DCHW
Cushion: #38 or #58
Material: Wrought Iron
Dimensions: W54" D68" H40.25"
Seat Cushion: W49" D53" H3.5"
Back Cushion: W49" D3.5" H30"
Arm Height: 22.5"
Seat Height: 19"
Weight: 79 lbs.
Warranty: Limited 20 Year Structural (frame)
(Retail) Limited 5 Year Finish
Limited 2 Year Cushion
Limited 2 year Component Parts
Features: -Hand Forged Wrought Iron
-3/4" Galvanized Steel Tubing Frame
-Galvanized Interwoven Lattice Back
-Aluminum Rivets
-Reticulated Outdoor-Grade Foam
-DuPont Delrin Glides (COM0101A)
COM Yardage: 6 yards
**Based on 54" wide plain fabric w/ no repeat railroad, or centering. Contact sales@owlee.com for custom fabric quote.*



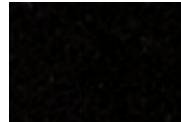
Finishes:



PG20: Coastal Grey



SP21: Graphite



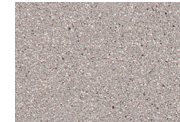
SP08: Textured Black



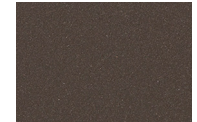
TC75: Oxford White



SW40: Driftwood



TC20: Sandalwood



SP18: Dark Bronze



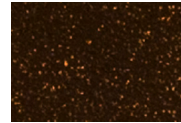
PG50: Metallic Cinnamon



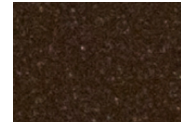
SP40: Copper Canyon



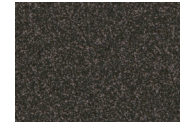
SP11: Rosewood



SP42: Espresso



SP22: Sable



TG10: Terra Antigua

