

# SAN CRISTÓBAL

## Double Chaise Lounge



- Item Number: #699-DCH
- Cushion: #99 (x2)
- Material: Wrought Iron
- Dimensions: W55" D70" H40"
- Seat Cushion: W26" D50" H7" (x2)
- Back Cushion: W26" D8" H26" (x2)
- Arm Height: 23.75"
- Seat Height: 19.5"
- Weight: 186 lbs.
- Warranty: Limited 20 Year Structural (frame)  
 (Retail) Limited 5 Year Finish  
 Limited 2 Year Cushion  
 Limited 2 year Component Parts
- Features: -3/4" Square Hammered Iron Tubing Frame  
 -Hand Forged Scrolls with Fish Tail Stamping  
 -Cast Iron Medallion  
 -UV Resistant  
 -Super-Polyester Powder Coating  
 -Reticulated Outdoor-Grade Foam  
 -Glides Protect Frame & Surface (COM0101A)



COM Yardage: 8 yards  
*\*Based on 54" wide plain fabric w/ no repeat railroad, or centering. Contact sales@owlee.com for custom fabric quote.*

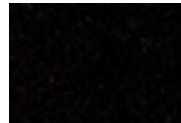
### Finishes:



PG20: Coastal Grey



SP21: Graphite



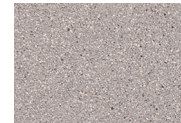
SP08: Textured Black



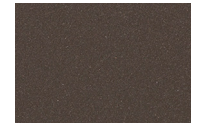
TC75: Oxford White



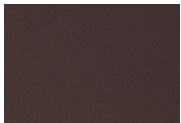
SW40: Driftwood



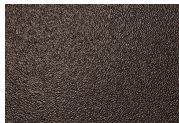
TC20: Sandalwood



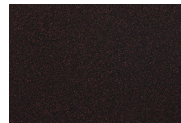
SP18: Dark Bronze



PG50: Metallic Cinnamon



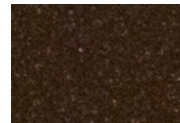
SP40: Copper Canyon



SP11: Rosewood



SP42: Espresso



SP22: Sable



TG10: Terra Antigua

