

SAN CRISTÓBAL

Double Chaise Lounge



Item Number: #699-DCH
 Cushion: #99 (x2)
 Material: Wrought Iron
 Dimensions: W55" D70" H40"
 Seat Cushion: W26" D50" H7" (x2)
 Back Cushion: W26" D8" H26" (x2)
 Arm Height: 23.75"
 Seat Height: 19.5"
 Weight: 186 lbs.
 Warranty: (Commercial) Limited 5 Year Structural (frame)
 Limited 3 Year Finish
 Limited 1 Year Cushion
 Limited 1 year Component Parts

Features: -3/4" Square Hammered Iron Tubing Frame
 -Hand Forged Scrolls with Fish Tail Stamping
 -Cast Iron Medallion
 -UV Resistant
 -Super-Polyester Powder Coating
 -Reticulated Outdoor-Grade Foam
 -Glides Protect Frame & Surface (COM0101A)



COM Yardage: 8 yards
**Based on 54" wide plain fabric w/ no repeat railroad, or centering. Contact sales@owlee.com for custom fabric quote.*

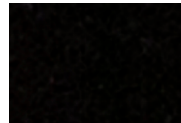
Finishes:



PG20: Coastal Grey



SP21: Graphite



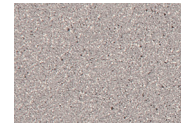
SP08: Textured Black



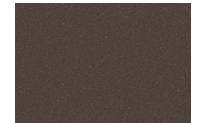
TC75: Oxford White



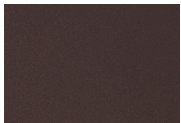
SW40: Driftwood



TC20: Sandalwood



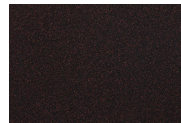
SP18: Dark Bronze



PG50: Metallic Cinnamon



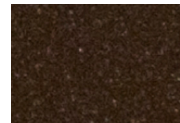
SP40: Copper Canyon



SP11: Rosewood



SP42: Espresso



SP22: Sable



TG10: Terra Antigua

