

SAN CRISTÓBAL

Lounge Chair



Item Number: #695-CC

Cushion: #95 or #115 (seat & back)

Material: Wrought Iron

Dimensions: W29" D39.5" H40"

Seat Cushion: W26" D26" H6"

Back Cushion: W26" D8" H22"

Arm Height: 26.5"

Seat Height: 20"

Weight: 52 lbs.

Warranty: Limited 20 Year Structural (frame)
(Retail) Limited 5 Year Finish
Limited 2 Year Cushion
Limited 2 year Component Parts

Features: -3/4" Square Hammered Iron Tubing Frame
-Hand Forged Scrolls with Fish Tail Stamping
-Cast Iron Medallion
-UV Resistant
-Super-Polyester Powder Coating
-PlushComfort™ Seat Cushion
-Glides Protect Frame & Surface (COM0101A)



COM Yardage: 3 yards

**Based on 54" wide plain fabric w/ no repeat railroad, or centering. Contact sales@owlee.com for custom fabric quote.*

Finishes:



PG20: Coastal Grey



SP21: Graphite



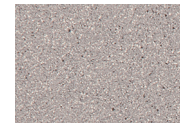
SP08: Textured Black



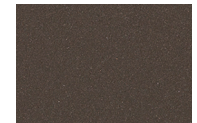
TC75: Oxford White



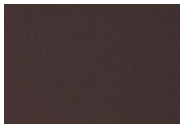
SW40: Driftwood



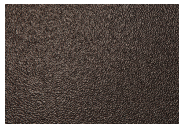
TC20: Sandalwood



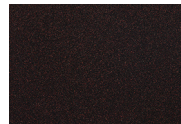
SP18: Dark Bronze



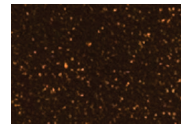
PG50: Metallic Cinnamon



SP40: Copper Canyon



SP11: Rosewood



SP42: Espresso



SP22: Sable



TG10: Terra Antigua

