

# SAN CRISTÓBAL

## Sofa Glider



Item Number: #695-3G

Cushion: #95 or #115 (seat & back)

Material: Wrought Iron

Dimensions: W82.25" D38.75" H40.5"

Seat Cushion: W26" D26" H6"

Back Cushion: W26" D8" H22"

Arm Height: 27.5"

Seat Height: 21"

Weight: 150 lbs.

Warranty: Limited 20 Year Structural (frame)  
(Retail) Limited 5 Year Finish  
Limited 2 Year Cushion  
Limited 2 year Component Parts

Features: -3/4" Square Hammered Iron Tubing Frame  
-Hand Forged Scrolls with Fish Tail Stamping  
-Cast Iron Medallion  
-UV Resistant  
-Super-Polyester Powder Coating  
-PlushComfort™ Seat Cushion  
-Glides Protect Frame & Surface (COM0101A)



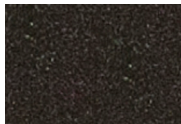
COM Yardage: 9 yards

*\*Based on 54" wide plain fabric w/ no repeat railroad, or centering. Contact sales@owlee.com for custom fabric quote.*

Finishes:



PG20: Coastal Grey



SP21: Graphite



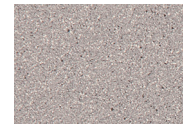
SP08: Textured Black



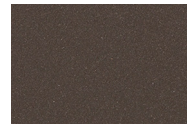
TC75: Oxford White



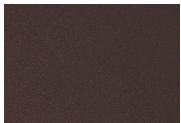
SW40: Driftwood



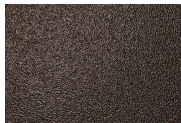
TC20: Sandalwood



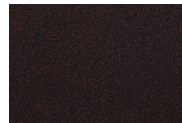
SP18: Dark Bronze



PG50: Metallic Cinnamon



SP40: Copper Canyon



SP11: Rosewood



SP42: Espresso



SP22: Sable



TG10: Terra Antigua

