

SAN CRISTÓBAL

Love Seat



Item Number: #695-2S
 Cushion: #95 or #115 (seat & back)
 Material: Wrought Iron
 Dimensions: W55.25" D38" H40"
 Seat Cushion: W26" D26" H6"
 Back Cushion: W26" D8" H22"
 Arm Height: 26.25"
 Seat Height: 20"
 Weight: 99 lbs.
 Warranty: Limited 20 Year Structural (frame)
 (Retail) Limited 5 Year Finish
 Limited 2 Year Cushion
 Limited 2 year Component Parts



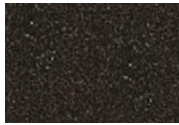
Features: -3/4" Square Hammered Iron Tubing Frame
 -Hand Forged Scrolls with Fish Tail Stamping
 -Cast Iron Medallion
 -UV Resistant
 -Super-Polyester Powder Coating
 -PlushComfort™ Seat Cushion
 -Glides Protect Frame & Surface (COM0101A)

COM Yardage: 6 yards
**Based on 54" wide plain fabric w/ no repeat railroad, or centering. Contact sales@owlee.com for custom fabric quote.*

Finishes:



PG20: Coastal Grey



SP21: Graphite



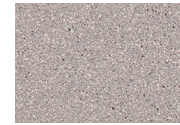
SP08: Textured Black



TC75: Oxford White



SW40: Driftwood



TC20: Sandalwood



SP18: Dark Bronze



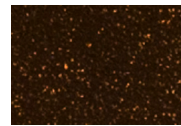
PG50: Metallic Cinnamon



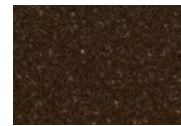
SP40: Copper Canyon



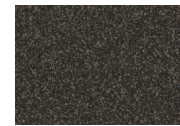
SP11: Rosewood



SP42: Espresso



SP22: Sable



TG10: Terra Antigua

