

MONTERRA

Club Dining Arm Chair



Item Number: #424-A
 Cushion: #24 (seat & back)
 Material: Wrought Iron
 Dimensions: W35.75" D31" H39.75"
 Seat Cushion: W23" D21" H3.5"
 Back Cushion: W27" D4" H24"
 Arm Height: 24.75"
 Seat Height: 20.5"
 Weight: 48 lbs.
 Warranty: Limited 5 Year Structural (frame)
 (Commercial) Limited 3 Year Finish
 Limited 1 Year Cushion
 Limited 1 year Component Parts



Features: -3/4" Steel Tubing Frame
 -1 1/2" Flat Embossed Back Bars
 -Convex Back Bend with Lumbar Support
 -Enlarged Hand-Hammered Rivets
 -Galvanized Steel Mesh Seat
 -Custom Tufted Back & Arm Cushions
 -PlushComfort™ Seat Cushion
 -Glides Protect Frame & Surface (COM0101A)

COM Yardage: Back Cushion - 3.5 yards
 *Based on 54" wide plain fabric w/ no repeat railroad, or centering. Contact sales@owlee.com for custom fabric quote.

Finishes:



PG20: Coastal Grey



SP21: Graphite



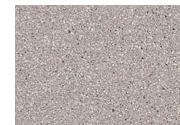
SP08: Textured Black



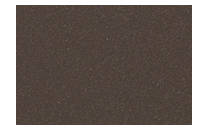
TC75: Oxford White



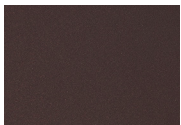
SW40: Driftwood



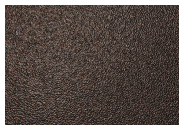
TC20: Sandalwood



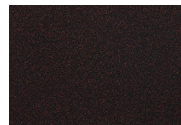
SP18: Dark Bronze



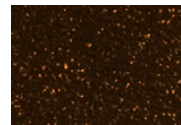
PG50: Metallic Cinnamon



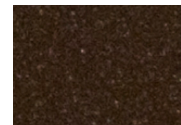
SP40: Copper Canyon



SP11: Rosewood



SP42: Espresso



SP22: Sable



TG10: Terra Antigua

