

Bellini

Dining Arm Chair



Item Number: #4153-A

Cushion: #53-S (seat)
#153-B (back - optional)

Material: Wrought Iron

Dimensions: W23" D27.75" H36.5"

Seat Cushion: W20" D18" H3"

Back Cushion: W19" D1.5" H15"

Arm Height: 25.5"

Seat Height: 20"

Weight: 43 lbs.

Warranty: Limited 5 Year Structural (frame)
(Commercial) Limited 3 Year Finish
Limited 1 Year Cushion
Limited 1 year Component Parts

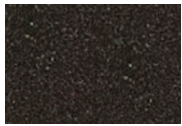
Features: -Hand Forged Wrought Iron
-1/2" Sq. Fluted Bar with Decorative Twist
-Cast Metal Medallion
-PlushComfort™ Seat Cushion
-Pillow Back Cushion
-DuPont Delrin Glides (COM0101A)

COM Yardage: Seat Cushion - 1 yard
Back Cushion - 1 yard
**Based on 54" wide plain fabric w/ no repeat railroad, or centering. Contact sales@owlee.com for custom fabric quote.*

Finishes:



PG20: Coastal Grey



SP21: Graphite



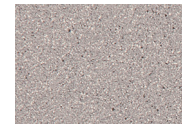
SP08: Textured Black



TC75: Oxford White



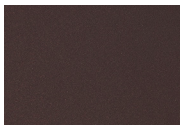
SW40: Driftwood



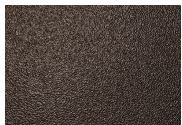
TC20: Sandalwood



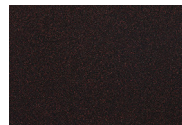
SP18: Dark Bronze



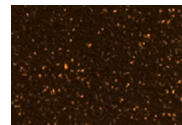
PG50: Metallic Cinnamon



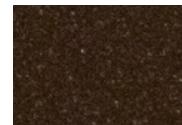
SP40: Copper Canyon



SP11: Rosewood



SP42: Espresso



SP22: Sable



TG10: Terra Antigua

