

MONTERRA

Double Ottoman



Item Number: #411-20

Cushion: #112

Material: Wrought Iron

Dimensions: W62.5" D26" H18.25"

Cushion: W52" D27" H8"

Weight: 43 lbs.

Warranty: Limited 20 Year Structural (frame)
(Retail) Limited 5 Year Finish
Limited 2 Year Cushion
Limited 2 year Component Parts

Features: -3/4" Steel Tubing Frame
-1 1/2" Flat Embossed Back Bars
-Convex Back Bend with Lumbar Support
-Enlarged Hand-Hammered Rivets
-Galvanized Steel Mesh Seat
-Reticulated Outdoor-Grade Foam
-Glides Protect Frame & Surface (COM0101A)
-Weight Capacity 300lbs.

COM Yardage: 3 yards

**Based on 54" wide plain fabric w/ no repeat railroad, or centering. Contact sales@owlee.com for custom fabric quote.*



Finishes:



PG20: Coastal Grey



SP21: Graphite



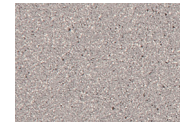
SP08: Textured Black



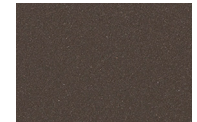
TC75: Oxford White



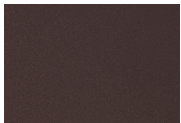
SW40: Driftwood



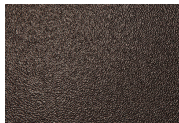
TC20: Sandalwood



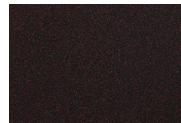
SP18: Dark Bronze



PG50: Metallic Cinnamon



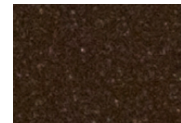
SP40: Copper Canyon



SP11: Rosewood



SP42: Espresso



SP22: Sable



TG10: Terra Antigua

