

MONTERRA

Double Ottoman



Item Number: #411-20
Cushion: #112
Material: Wrought Iron
Dimensions: W62.5" D26" H18.25"
Cushion: W52" D27" H8"
Weight: 43 lbs.
Warranty: Limited 5 Year Structural (frame)
(Commercial) Limited 3 Year Finish
Limited 1 Year Cushion
Limited 1 year Component Parts

Features: -3/4" Steel Tubing Frame
-1 1/2" Flat Embossed Back Bars
-Convex Back Bend with Lumbar Support
-Enlarged Hand-Hammered Rivets
-Galvanized Steel Mesh Seat
-Reticulated Outdoor-Grade Foam
-Glides Protect Frame & Surface (COM0101A)
-Weight Capacity 300lbs.



COM Yardage: 3 yards
**Based on 54" wide plain fabric w/ no repeat railroad, or centering. Contact sales@owlee.com for custom fabric quote.*

Finishes:



PG20: Coastal Grey



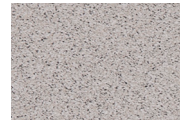
SP21: Graphite



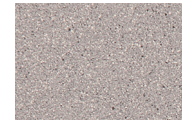
SP08: Textured Black



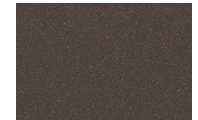
TC75: Oxford White



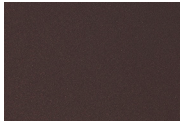
SW40: Driftwood



TC20: Sandalwood



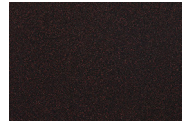
SP18: Dark Bronze



PG50: Metallic Cinnamon



SP40: Copper Canyon



SP11: Rosewood



SP42: Espresso



SP22: Sable



TG10: Terra Antigua

