

ST. CHARLES

Dining Arm Chair



Item Number: #2653-A

Cushion: #53-S (Seat)
#123-B (Back - Optional)

Material: Wrought Iron

Dimensions: W23" D29" H39"

Seat Cushion: W20" D18" H3"

Back Cushion: W19.5" D2" H19"

Arm Height: 26"

Seat Height: 19.5"

Weight: 31 lbs.

Warranty: Limited 5 Year Structural (frame)
(Commercial) Limited 3 Year Finish
Limited 1 Year Cushion
Limited 1 year Component Parts

Features: -7/8" Galvanized Steel Tubing Frame
-Contoured Back for Lumbar Support
-Hand Forged Scrolls
-Reticulated Outdoor-Grade Foam
-Decorative Cast Buttons
-Glides Protect Frame & Surface (COM0101A)

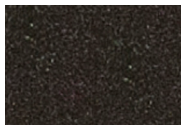
COM Yardage: Back Cushion - 0.75 yard
Seat Cushion - 1 yard
**Based on 54" wide plain fabric w/ no repeat railroad, or centering. Contact sales@owlee.com for custom fabric quote.*



Finishes:



PG20: Coastal Grey



SP21: Graphite



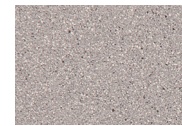
SP08: Textured Black



TC75: Oxford White



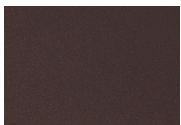
SW40: Driftwood



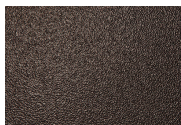
TC20: Sandalwood



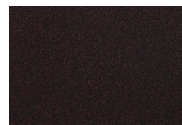
SP18: Dark Bronze



PG50: Metallic Cinnamon



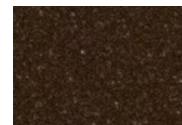
SP40: Copper Canyon



SP11: Rosewood



SP42: Espresso



SP22: Sable



TG10: Terra Antigua

