

ST. CHARLES

Spring Base Lounge Chair



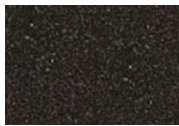
Item Number: #26125-SB
 Cushion: #125 (Seat & Back)
 Material: Wrought Iron
 Dimensions: W30" D38.5" H43"
 Seat Cushion: W26" D26" H6"
 Back Cushion: W26" D6" H26"
 Arm Height: 26.5"
 Seat Height: 20"
 Weight: 62 lbs.
 Warranty: Limited 5 Year Structural (frame)
 (Commercial) Limited 3 Year Finish
 Limited 1 Year Cushion
 Limited 1 year Component Parts
 Features: -7/8" Galvanized Steel Tubing Frame
 -Contoured Back for Lumbar Support
 -Hand Forged Scrolls
 -PlushComfort™ Seat Cushion
 -Decorative Cast Buttons
 -Glides Protect Frame & Surface (COM0101A)
 COM Yardage: 2.5 yards
**Based on 54" wide plain fabric w/ no repeat railroad, or centering. Contact sales@owlee.com for custom fabric quote.*



Finishes:



PG20: Coastal Grey



SP21: Graphite



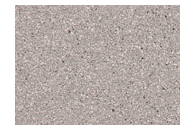
SP08: Textured Black



TC75: Oxford White



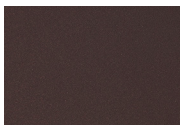
SW40: Driftwood



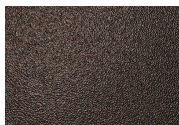
TC20: Sandalwood



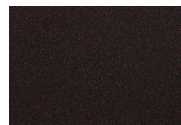
SP18: Dark Bronze



PG50: Metallic Cinnamon



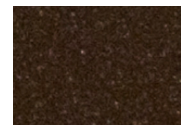
SP40: Copper Canyon



SP11: Rosewood



SP42: Espresso



SP22: Sable



TG10: Terra Antigua

