

# MARQUETTE

## Dining Arm Chair



Item Number: #2053-A

Cushion: #53-S (Seat)  
#53-B (Back - optional)

Material: Wrought Iron

Dimensions: W23" D25" H35.75"

Seat Cushion: W20" D18" H3"

Back Cushion: W20" D1" H17.5"

Arm Height: 25.5"

Seat Height: 19"

Weight: 31 lbs.

Warranty: Limited 5 Year Structural (frame)  
(Commercial) Limited 3 Year Finish  
Limited 1 Year Cushion  
Limited 1 year Component Parts

Features: -3/4" Galvanized Steel Tubing Frame  
-Galvanized Interwoven back  
-Spring Steel Strap Seat  
-Aluminum Rivets  
-Leg Brace Support Stretchers  
-Reticulated Outdoor-Grade Foam  
-Glides Protect Frame & Surface (COM0101A)



COM Yardage: Seat Cushion - 1 yard  
Back Cushion - 1 yard

*\*Based on 54" wide plain fabric w/ no repeat railroad, or centering. Contact sales@owlee.com for custom fabric quote.*

Finishes:



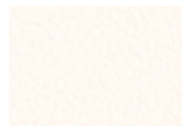
PG20: Coastal Grey



SP21: Graphite



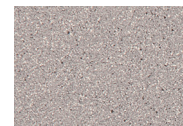
SP08: Textured Black



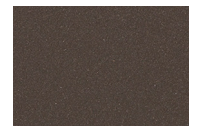
TC75: Oxford White



SW40: Driftwood



TC20: Sandalwood



SP18: Dark Bronze



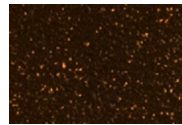
PG50: Metallic Cinnamon



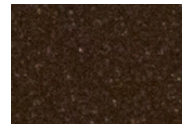
SP40: Copper Canyon



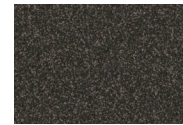
SP11: Rosewood



SP42: Espresso



SP22: Sable



TG10: Terra Antigua

