

MARQUETTE

Dining Side Chair



Item Number: #2051-S

Cushion: #51-S (Seat)
#51-B (Back - optional)

Material: Wrought Iron

Dimensions: W19" D24.75" H35.75"

Seat Cushion: W17.5" D17.5" H3"

Back Cushion: W17.5" D2.5" H17.5"

Seat Height: 19"

Weight: 18 lbs.

Warranty: Limited 20 Year Structural (frame)
Limited 5 Year Finish
Limited 2 Year Cushion
Limited 2 year Component Parts

Features: -3/4" Galvanized Steel Tubing Frame
-Galvanized Interwoven back
-Spring Steel Strap Seat
-Aluminum Rivets
-Leg Brace Support Stretchers
-Reticulated Outdoor-Grade Foam
-Glides Protect Frame & Surface (COM0101A)



COM Yardage: Seat Cushion - 1 yard
Back Cushion - 1 yard

**Based on 54" wide plain fabric w/ no repeat railroad, or centering. Contact sales@owlee.com for custom fabric quote.*

Finishes:



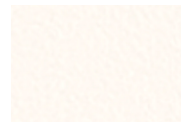
PG20: Coastal Grey



SP21: Graphite



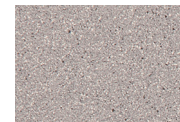
SP08: Textured Black



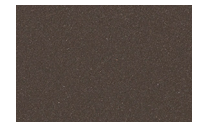
TC75: Oxford White



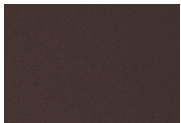
SW40: Driftwood



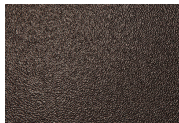
TC20: Sandalwood



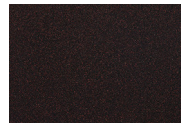
SP18: Dark Bronze



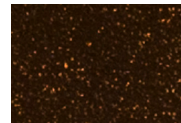
PG50: Metallic Cinnamon



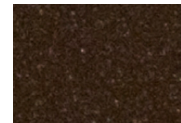
SP40: Copper Canyon



SP11: Rosewood



SP42: Espresso



SP22: Sable



TG10: Terra Antigua

