

CAMBRIA

Adjustable Chaise



Item Number: #17138-CH
Cushion: #138 (Seat, Back & Arm)
Material: Wrought Iron
Dimensions: W35" D80" H42"
Seat & Back Cushion: W31" D75" H3"
Arm Cushions: W6" D22" H11"
Arm Height: 21.5"
Seat Height: 17"
Weight: 62 lbs.
Warranty: Limited 20 Year Structural (frame)
(Retail) Limited 5 Year Finish
Limited 2 Year Cushion
Limited 2 year Component Parts

Features: -3/4" Rd. Galvanized Steel Tube Frame
-Barrel Back Design
-Decorative Tufted Back & Arms Cushions
-Velcro Tabs Keep Cushions Attached
-Reticulated Outdoor-Grade Foam
-DuPont Delrin Glides (COM0101A)

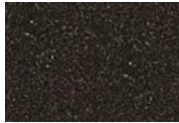


COM Yardage: 4.5 yards
**Based on 54" wide plain fabric w/ no repeat railroad, or centering. Contact sales@owlee.com for custom fabric quote.*

Finishes:



PG20: Coastal Grey



SP21: Graphite



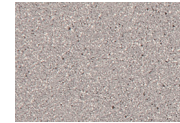
SP08: Textured Black



TC75: Oxford White



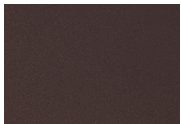
SW40: Driftwood



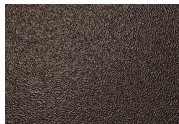
TC20: Sandalwood



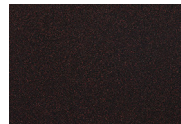
SP18: Dark Bronze



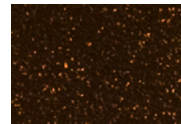
PG50: Metallic Cinnamon



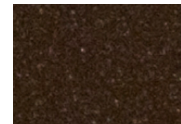
SP40: Copper Canyon



SP11: Rosewood



SP42: Espresso



SP22: Sable



TG10: Terra Antigua

