

# CAMBRIA

Adjustable Chaise



Item Number: #17138-CH  
Cushion: #138 (Seat, Back & Arm)  
Material: Wrought Iron  
Dimensions: W35" D80" H42"  
Seat & Back Cushion: W31" D75" H3"  
Arm Cushions: W6" D22" H11"  
Arm Height: 21.5"  
Seat Height: 17"  
Weight: 62 lbs.  
Warranty: Limited 5 Year Structural (frame)  
(Commercial) Limited 3 Year Finish  
Limited 1 Year Cushion  
Limited 1 year Component Parts

Features: -3/4" Rd. Galvanized Steel Tube Frame  
-Barrel Back Design  
-Decorative Tufted Back & Arms Cushions  
-Velcro Tabs Keep Cushions Attached  
-Reticulated Outdoor-Grade Foam  
-DuPont Delrin Glides (COM0101A)

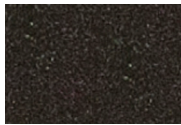
COM Yardage: 4.5 yards  
*\*Based on 54" wide plain fabric w/ no repeat railroad, or centering. Contact sales@owlee.com for custom fabric quote.*



## Finishes:



PG20: Coastal Grey



SP21: Graphite



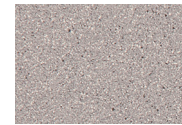
SP08: Textured Black



TC75: Oxford White



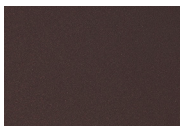
SW40: Driftwood



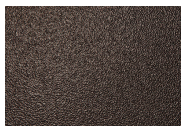
TC20: Sandalwood



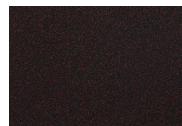
SP18: Dark Bronze



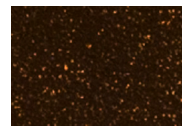
PG50: Metallic Cinnamon



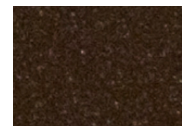
SP40: Copper Canyon



SP11: Rosewood



SP42: Espresso



SP22: Sable



TG10: Terra Antigua

