

MONTERRA

Double Ottoman



Item Number: #411-20

Cushion: #11

Material: Wrought Iron

Dimensions: W62.5" D26" H18.25"

Cushion: W52" D27" H8"

Weight: 43 lbs.

Warranty: Limited 5 Year Structural (frame)
(Commercial) Limited 3 Year Finish
Limited 1 Year Cushion
Limited 1 year Component Parts

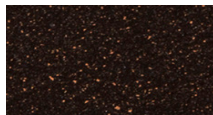
Features: -Hand forged wrought iron
-Super-Polyester powder coating
-UV Resistant
-Reticulated Outdoor-Grade Foam
-Stock Sunbrella and COM available
-Weight Capacity 300lbs.

COM Yardage: 3 yards
**Based on 54" wide plain fabric w/ no repeat railroad, or centering. Contact sales@owlee.com for custom fabric quote.*

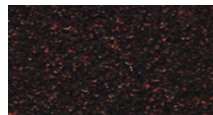
Finishes:



SP40 Copper Canyon



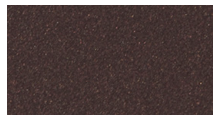
SP42 Espresso



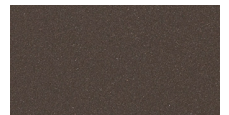
SP11 Rosewood



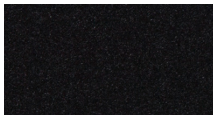
SP22 Sable



PG50 Metallic Cinnamon



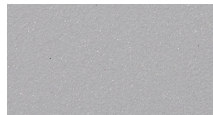
SP18 Dark Bronze



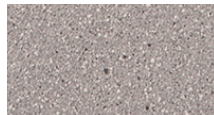
SP08 Textured Black



SP21 Graphite



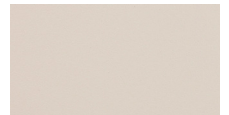
TC70 Alpine Silver



TC20 Sandalwood



SW40 Driftwood



TC75 Oxford White

