

SAN CRISTÓBAL

Double Chaise Lounge



Item Number: #699-DCH
Cushion: #99 (x2)
Material: Wrought Iron
Dimensions: W55" D70" H40"
Seat Cushion: W26" D50" H7" (x2)
Back Cushion: W26" D8" H26" (x2)
Arm Height: 23.75"
Seat Height: 19.5"
Weight: 186 lbs.
Warranty: Limited 5 Year Structural (frame)
(Commercial) Limited 3 Year Finish
Limited 1 Year Cushion
Limited 1 year Component Parts

Features: -Hand forged wrought iron
-Super-Polyester powder coating
-UV Resistant
-Reticulated Outdoor-Grade Foam
-Stock Sunbrella and COM available
-Optional welt and cording available

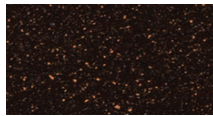
COM Yardage: 8 yards
**Based on 54" wide plain fabric w/ no repeat railroad, or centering. Contact sales@owlee.com for custom fabric quote.*



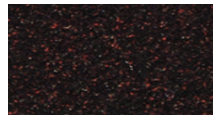
Finishes:



SP40 Copper Canyon



SP42 Espresso



SP11 Rosewood



SP22 Sable



PG50 Metallic Cinnamon



SP18 Dark Bronze



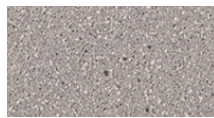
SP08 Textured Black



SP21 Graphite



TC70 Alpine Silver



TC20 Sandalwood



SW40 Driftwood



TC75 Oxford White

