

# SAN CRISTÓBAL

## Crescent Love Seat



Item Number: #692-2S  
Cushion: #262  
Material: Wrought Iron  
Dimensions: W68" D39" H40"  
Seat Cushion: W60" D30" H7"  
Back Cushions: W33" D7" H27" (x2)  
Arm Height: 27"  
Seat Height: 20.5"  
Weight: 102 lbs.  
Warranty: Limited 20 Year Structural (frame)  
(Retail) Limited 5 Year Finish  
Limited 2 Year Cushion  
Limited 2 year Component Parts  
Features: -Hand forged wrought iron  
-Super-Polyester powder coating  
-UV Resistant  
-Reticulated Outdoor-Grade Foam  
-Stock Sunbrella and COM available  
-Optional welt and cording available



COM Yardage: 6.75 yards  
*\*Based on 54" wide plain fabric w/ no repeat railroad, or centering. Contact sales@owlee.com for custom fabric quote.*

### Finishes:



SP40 Copper Canyon



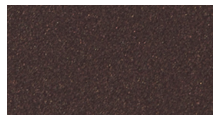
SP42 Espresso



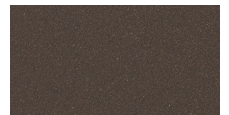
SP11 Rosewood



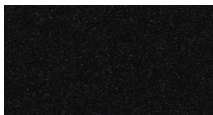
SP22 Sable



PG50 Metallic Cinnamon



SP18 Dark Bronze



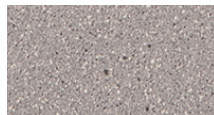
SP08 Textured Black



SP21 Graphite



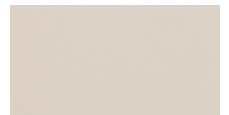
TC70 Alpine Silver



TC20 Sandalwood



SW40 Driftwood



TC75 Oxford White

