

SAN CRISTÓBAL

Dining Arm Chair



Item Number: #653-A

Cushion: #53-S (seat)
#05-B (back - optional)

Material: Wrought Iron

Dimensions: W23.5" D26.5" H38.25"

Seat Cushion: W20" D18" H3"

Back Cushion: W19" D2" H17.5"

Arm Height: 26.75"

Seat Height: 19"

Weight: 36 lbs.

Warranty: Limited 5 Year Structural (frame)
(Commercial) Limited 3 Year Finish
Limited 1 Year Cushion
Limited 1 year Component Parts

Features:

- Hand forged wrought iron
- Super-Polyester powder coating
- UV Resistant
- Reticulated Outdoor-Grade Foam
- Stock Sunbrella and COM available
- Optional welt and cording available

COM Yardage: Back Cushion - 1 yard
Seat Cushion - 1 yard

**Based on 54" wide plain fabric w/ no repeat railroad, or centering. Contact sales@owlee.com for custom fabric quote.*

Finishes:



SP40 Copper Canyon



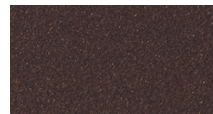
SP42 Espresso



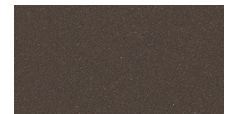
SP11 Rosewood



SP22 Sable



PG50 Metallic Cinnamon



SP18 Dark Bronze



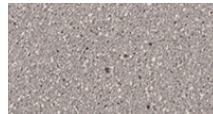
SP08 Textured Black



SP21 Graphite



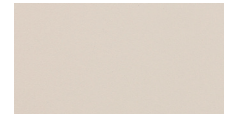
TC70 Alpine Silver



TC20 Sandalwood



SW40 Driftwood



TC75 Oxford White

