

# MONTERRA

## Crescent Love Seat



Item Number: #426-2S  
Cushion: #262  
Material: Wrought Iron  
Dimensions: W70" D45" H43.5"  
Seat Cushion: W52.5" D30.25" H7.5"  
Back Cushion: W76" D8" H26"  
Arm Cushion: W7" D26" H12.5" (2)  
Arm Height: 25.5"  
Seat Height: 19.5"  
Weight: 100 lbs.  
Warranty: Limited 5 Year Structural (frame)  
(Commercial) Limited 3 Year Finish  
Limited 1 Year Cushion  
Limited 1 year Component Parts



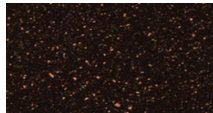
Features: -Hand forged wrought iron  
-Super-Polyester powder coating  
-UV Resistant  
-Reticulated Outdoor-Grade Foam  
-Stock Sunbrella and COM available

COM Yardage: 9 yards  
*\*Based on 54" wide plain fabric w/ no repeat railroad, or centering. Contact sales@owlee.com for custom fabric quote.*

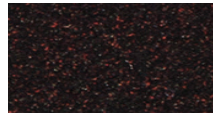
### Finishes:



SP40 Copper Canyon



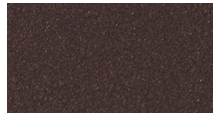
SP42 Espresso



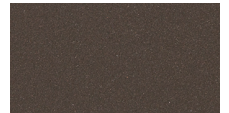
SP11 Rosewood



SP22 Sable



PG50 Metallic Cinnamon



SP18 Dark Bronze



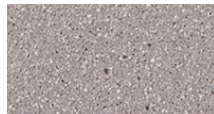
SP08 Textured Black



SP21 Graphite



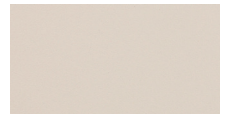
TC70 Alpine Silver



TC20 Sandalwood



SW40 Driftwood



TC75 Oxford White

