

MARQUETTE

Dining Arm Chair



Item Number: #2053-A

Cushion: #53-S (Seat)
#53-B (Back - optional)

Material: Wrought Iron

Dimensions: W23" D26" H36"

Seat Cushion: W20" D18" H3"

Back Cushion: W20" D1" H17.5"

Arm Height: 25.5"

Seat Height: 19"

Weight: 31 lbs.

Warranty: Limited 5 Year Structural (frame)
(Commercial) Limited 3 Year Finish
Limited 1 Year Cushion
Limited 1 year Component Parts

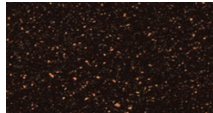
Features: -Hand forged wrought iron
-Super-Polyester powder coating
-UV Resistant
-Reticulated Outdoor-Grade Foam
-Stock Sunbrella and COM available
-Optional welt and cording available

COM Yardage: Seat Cushion - 1 yard
Back Cushion - 1 yard
**Based on 54" wide plain fabric w/ no repeat railroad, or centering. Contact sales@owlee.com for custom fabric quote.*

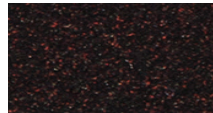
Finishes:



SP40 Copper Canyon



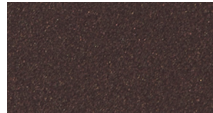
SP42 Espresso



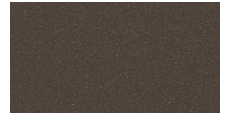
SP11 Rosewood



SP22 Sable



PG50 Metallic Cinnamon



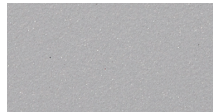
SP18 Dark Bronze



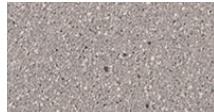
SP08 Textured Black



SP21 Graphite



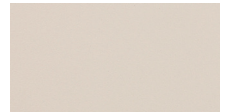
TC70 Alpine Silver



TC20 Sandalwood



SW40 Driftwood



TC75 Oxford White

