

CAMBRIA

Club Swivel Counter Stool



Item Number: #17133-SCS

Cushion: #133 (Seat, Back & Arms)

Material: Wrought Iron

Dimensions: W29.75" D28.75" H46"

Seat Cushion: W20" D20" H4"

Back Cushion: W23" D6" H21"

Arm Cushions: W5" D17.25" H8.25" (x2)

Arm Height: 34.25"

Seat Height: 28"

Weight: 39 lbs.

Warranty: Limited 20 Year Structural (frame)
 (Retail) Limited 5 Year Finish
 Limited 2 Year Cushion
 Limited 2 year Component Parts

Features: -Hand forged wrought iron
 -Super-Polyester powder coating
 -UV Resistant
 -Reticulated Outdoor-Grade Foam
 -Stock Sunbrella and COM available

COM Yardage: Seat, Back & Arm Cushions - 2.25 yards
**Based on 54" wide plain fabric w/ no repeat railroad, or centering. Contact sales@owlee.com for custom fabric quote.*



Finishes:



SP40 Copper Canyon



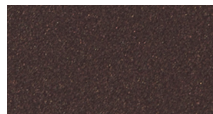
SP42 Espresso



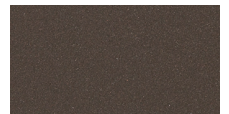
SP11 Rosewood



SP22 Sable



PG50 Metallic Cinnamon



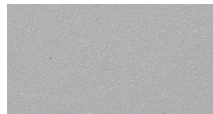
SP18 Dark Bronze



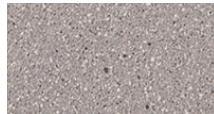
SP08 Textured Black



SP21 Graphite



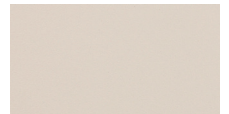
TC70 Alpine Silver



TC20 Sandalwood



SW40 Driftwood



TC75 Oxford White

